

Recirculation Pump AXD-I

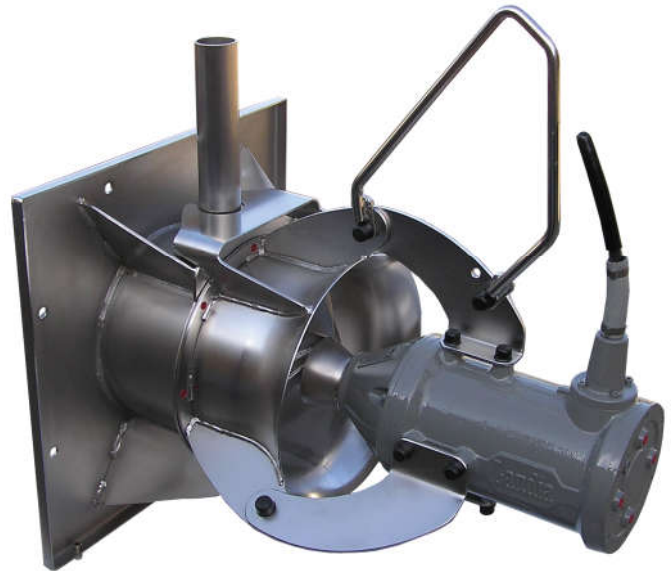
An axial propeller pump designed to pump large amounts of liquids with low back pressure. The pump is often used at sewage treatment plants for recirculating sludge, but it can also be used in, for example, drainage and for recirculation at fish farming facilities.

APPLICATION EXAMPLES

- Recirculation in activated sludge processes
- Aqua culture, recirculation

PROPELLER RPM

900 rpm



MATERIAL OF CONSTRUCTION

Motor housing and oil chamber	Cast iron AISI A48-40B
Propeller, volute insert and protection collar	Stainless steel AISI 304
Shaft	AISI4340
Bolts	Steel AISI 316
Sealing system	Mechanical shaft seals: silicon carbide/silicon carbide
Oil type	15W-40 Vario HDX (with moisture detection)

SERVICE AND MAINTENANCE

Recommended service interval/oil change	Maximum 2,500 operating hours/minimum once a year
Motor	Lifetime lubricated bearings
Oil chamber	Periodic oil change

SURFACE TREATMENT

2-component coating: RAL 7005 (Mouse Grey)

Mouse Grey

ELECTRICAL CABLE

Resistant to abrasion, oil and UV radiation.



Number of conductors:

SOOW 7AWG14

23' (other lengths available upon request)

MONITORING FUNCTIONS

Bimetal thermal sensors 248 °F

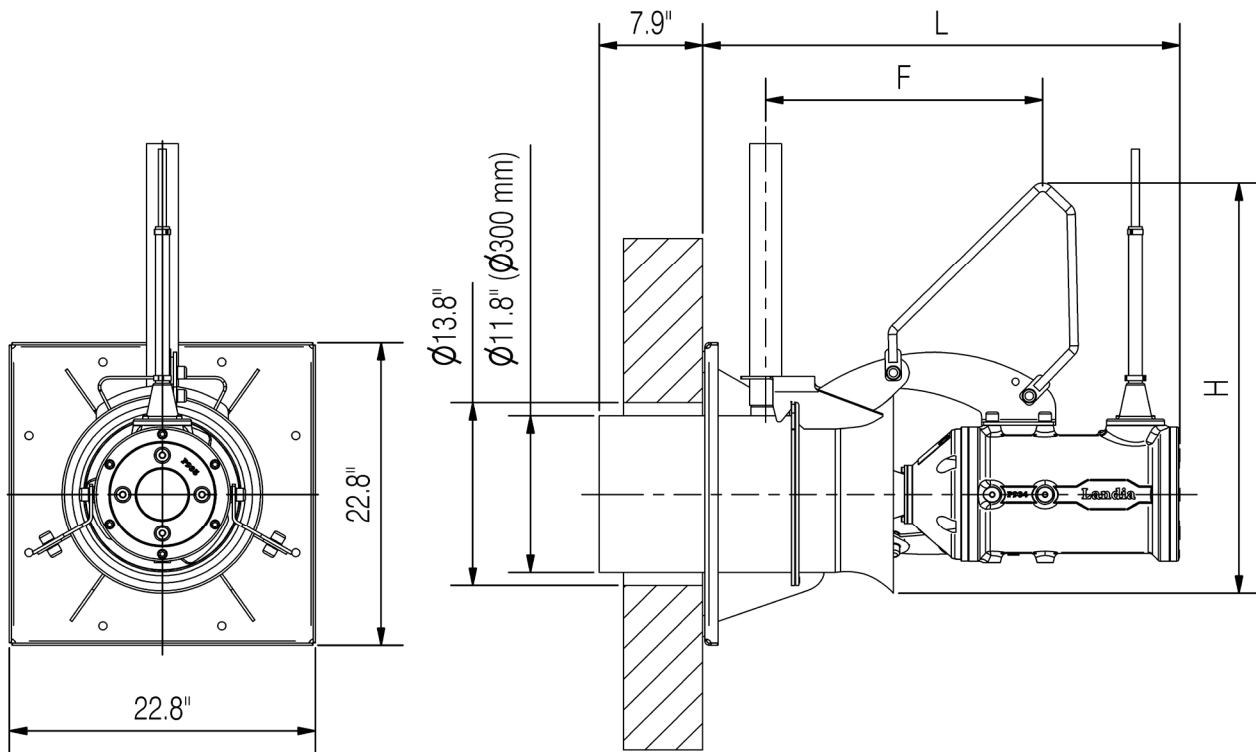
Moisture detection system (optional)

ELECTRICAL DATA

Motor type	3-phase AC motor
Nominal voltage	460 V
Minimum voltage allowed	415 V
Nominal frequency	60 Hz
Suitable for VFD-operation	Yes
Cage class	IP 68
Insulation class	F
ATEX classification	Class I, Groups C & D (option for selected models)
Variable-speed drives	Inverter Duty Rated

Model	Nominal power	Motor	Full load current (460 V)	Connection method		Start current (DOL)	cos phi	Efficiency (100%)
	[HP]	[rpm]	[A]	[V]	Y/Δ	[A]		[%]
AXD-I 300 2.4 HP-900 rpm	2.4	850	4.3	460	Y	20	0.67	78.0
AXD-I 300 3.6 HP-900 rpm	3.6	865	6.0	460	Y	27	0.71	76.0
AXD-I 300 4.9 HP-900 rpm	4.9	855	7.9	460	Δ	34	0.73	78.0
AXD-I 300 6.5 HP-900 rpm	6.5	860	10.5	460	Δ	42	0.73	79.5

OVERALL DIMENSIONS



Model	F [mm]	H [mm]	L [mm]	Weight [lb]
AXD-I 300 2.4 HP-900 rpm	16.7	29.5	31.5	150
AXD-I 300 3.6 HP-900 rpm	18.5	28.7	33.3	168
AXD-I 300 4.9 HP-900 rpm	18.5	28.7	33.3	174
AXD-I 300 6.5 HP-900 rpm	20.9	31.5	36.0	249

We reserve the right to make technical alterations.